

The Korean Institute of Broadcast and Media Engineers

Overview / History / Organization

Publications

Major Activities

Membership



THE KOREAN INSTITUTE BROADCAST AND MEDIA ENGINEERS

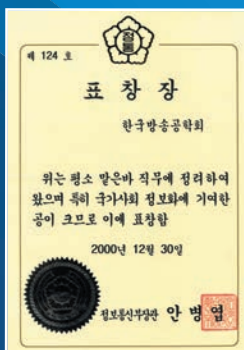


#1108, New building, The Korea Science and Technology Center, 22, 7-Gil,
Teheran-Ro, Gangnam-Gu, Seoul 06130, Republic of Korea
Phone: +82-2-568-3556, Fax: +82-2-568-3557
e-mail: admin@kibme.org, URL: <http://www.kibme.org>

Overview

Broadcasting and media technologies are getting more important as various new services are created by the convergence between broadcasting and communication. The Korean Institute of Broadcast and Media Engineers (KIBME) has taken a leading role in research and development of the cutting edge technologies and new services in the broadcasting and media fields. Furthermore, it hosts many academic activities and publishes technical journals and magazines. These activities will extend to pave the way to the era for the next generation broadcast and media in the future.

- **Established** July 15, 1994
- **Mission** To contribute to the growth of the broadcast culture and technologies, and to promote the broadcast and media industries
- **Major Activities**
 - Publication of technical journals and magazines
 - Holding international and domestic conferences, workshops, and seminars
 - Promotion of research projects and international collaboration
 - Research on development of broadcasting and media technologies
 - Research on development of broadcasting and media industries
 - Promotion support of technical professionals of broadcasting and media technologies
 - Research on standardization of broadcasting and media technologies
 - Research encouragement and Commendation on excellent contribution
 - Etc.
- **Members** Engineers, professionals, organizations, and industries in broadcasting and media technologies
- **Organization** Board of Directors (BoD), Committees, Technical Groups, and Regional Sections
- **Website** www.kibme.org



A minister award certificate



2015 Committee meeting



2016 BoD Workshop

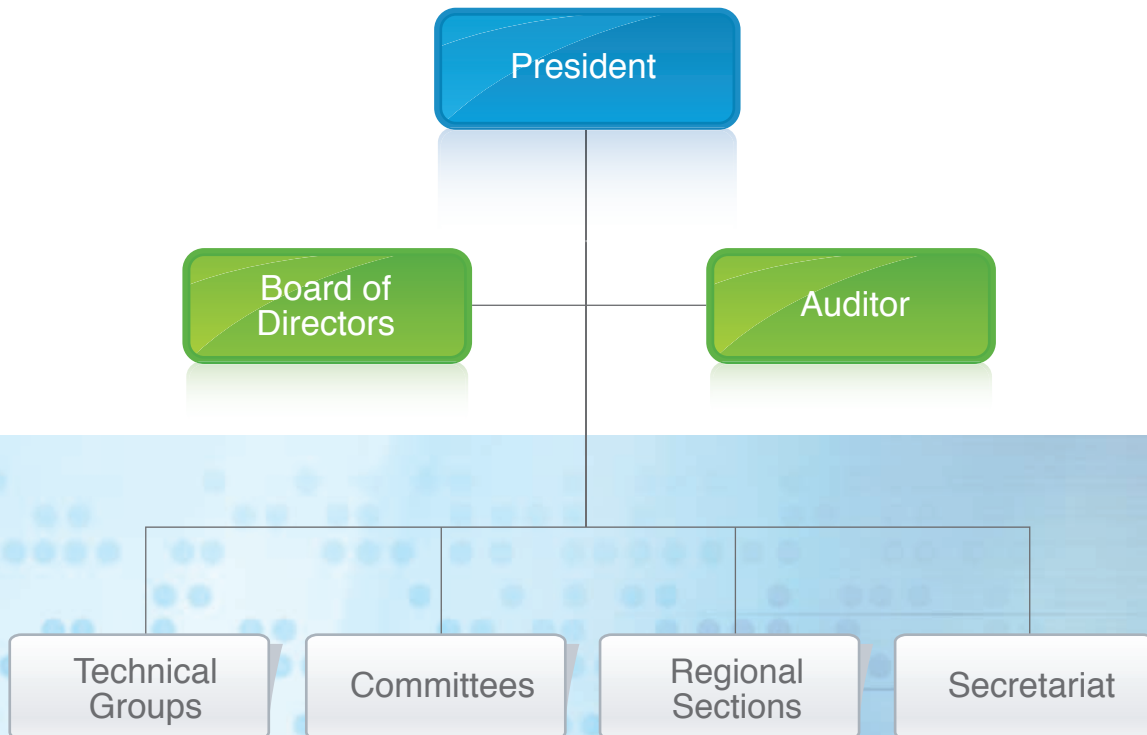
□ History

- July 1994 The Korean Institute of Broadcast and Media Engineers established and Jung-Woong Na (KAIST) inaugurated as the first President
- Nov. 1995 First Annual Conference held
- Dec. 1995 First issue of the quarterly KSBE Magazine published
- Mar. 1996 First issue of the biannual KSBE Journal published
- Jan. 1997 Tae Won Rhee (Korea Univ.) inaugurated as the 2nd President
- Jan. 1998 First IWAIT (International Workshop on Advanced Image Technology) held in Jeju
- Jan. 1999 Choong Woong Lee (Seoul National Univ.) inaugurated as the 3rd President
- June 1999 First biannual KSBE Digital Broadcasting Technology Workshop held
- Mar. 2002 KSBE Journal became quarterly
- Jan. 2003 Hyukjae Lee (KAIST) inaugurated as the 4th President
- Jan. 2007 Sang Uk Lee (Seoul National Univ.) inaugurated as the 5th President
- Jan. 2007 KSBE Magazine became bimonthly
- Jan. 2007 KSBE Journal selected as a Registered Journal of the National Research Foundation of Korea
- Jan. 2009 Kwang Jeek Lee (Seoul National Univ. of Technology) inaugurated as the 6th President
- Jan. 2010 Jae Hong Lee (Seoul National Univ.) inaugurated as the 7th President
- June 2010 Annual Conference extended to biannual Conferences
- Jan. 2011 Jae Hong Park (Net & TV) inaugurated as the 8th President
- Jan. 2012 Jechang Jeong (Hanyang Univ.) inaugurated as the 9th President
- Jan. 2013 Dae-Gwon Jung (Korea Aerospace Univ.) inaugurated as the 10th President
- Jan. 2014 Chieteuk Ahn (ETRI) inaugurated as the 11th President
- July 2014 The 20th anniversary ceremony of the founding
- Dec. 2014 MOU agreement with six domestic ICT Societies and IITP
- Jan. 2015 Sanggil Lee (DIMA) inaugurated as the 12th President
- Jan. 2015 Magazine name change (from KSBEM to Broadcast and Media Magazine)
- Mar. 2015 MOU agreement with KOBETA(The Korean Broadcasting Engineers & Technicians Association)
- July 2015 MOU agreement with Digital Fusion Cental of Jeju Techno Park
- Jan. 2016 Change the title of institute (from KSBE to KIBME)
- Jan. 2016 Yo-Sung Ho (GIST) inaugurated as the 13th President
- Jan. 2016 IWAIT (International Workshop on Advanced Image Technology) 2016 held in Busan



The 20th anniversary ceremony of the founding (2014.7.15.)

□ Organization



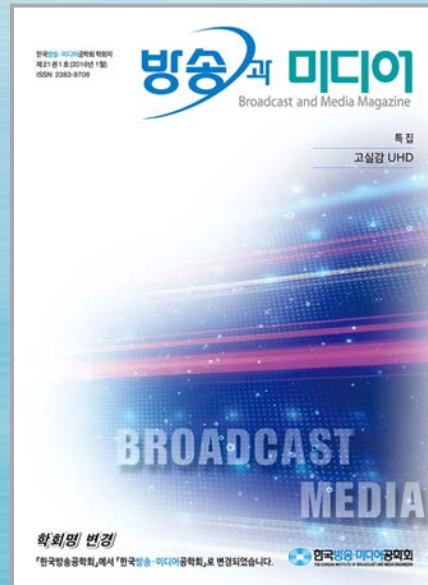
Publications

□ Journal of Broadcast Engineering (KIBME Journal)

- Published bimonthly with technical papers in broadcasting, media, and communications areas. Became one of the Registered Journals of the National Research Foundation of Korea since 2008.

□ Broadcast and Media Magazine (KIBME Magazine)

- Published quarterly with special topics or upcoming technologies in wide range of broadcasting and media fields.



□ Access to Publications

- Please visit the KIBME website www.kibme.org

Major Activities

□ International Conference

- IWAIT (International Workshop on Advanced Image Technology)
Launched in 1996, the IWAIT has been held in Korea, Japan, Taiwan, Thailand, Hongkong, and Indonesia with the co-sponsorship of the KIBME (Korea), IEICE (Japan), ITE (Japan), and MOST (Taiwan). It aims to share the up-to-date technologies and services on image processing, video technology, computer graphics and multimedia systems.



IWAIT 2016 Organization committee

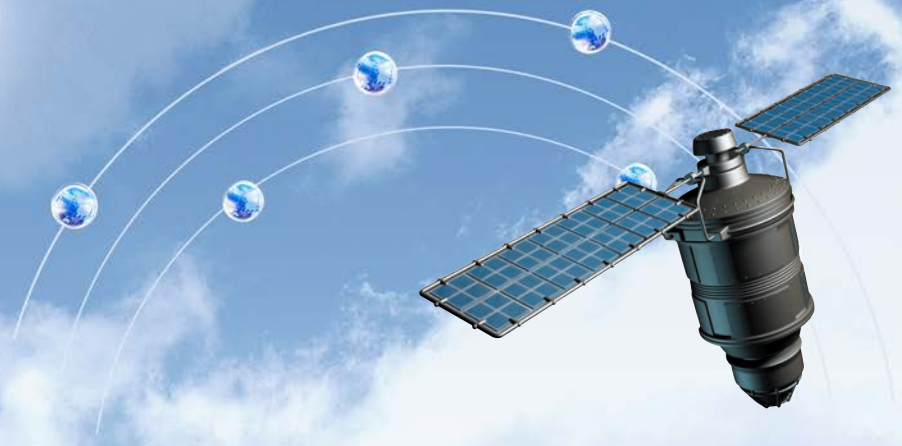


IWAIT 2016 International W/S



IWAIT 2016 Banquet





□ Domestic Conferences, Workshops, and Seminars

- Biannual KIBME Conferences held in summer and fall
- Biannual KIBME Digital Broadcasting Technology Workshops held in spring and fall
- Other seminars and workshops:
 - Workshop on 3DTV Broadcasting
 - Workshop on Open Hybrid TV
 - Workshop on Mobile Broadcasting
 - Workshop on 3D/UHD Technologies



2015 Summer Annual Conference



2015 Fall Digital Broadcasting Technology Workshop



2016 Immersive Media Workshop

Membership

□ Benefits

- On-line paper submission and review
- Reduced registration fee for KIBME conferences and workshops
- Free KIBME Journals and Magazines to registered members

□ Fee

- Visit the KIBME website www.kibme.org

□ Membership Registration

- On-line registration at the KIBME website www.kibme.org
- All inquiries to admin@kibme.org



#1108, New building, The Korea Science and Technology Center, 22, 7-Gil,
Teheran-Ro, Gangnam-Gu, Seoul 06130, Republic of Korea
Phone: +82-2-568-3556, Fax: +82-2-568-3557
e-mail: admin@kibme.org, URL: <http://www.kibme.org>